

you know it keys

This piano score is written in 4/4 time and consists of five systems of music. The first system (measures 1-4) is in B-flat major, featuring a treble staff with arpeggiated chords and a bass staff with eighth-note triplets. The second system (measures 5-8) changes to D major, with the treble staff playing sustained chords and the bass staff continuing with triplet patterns. The third system (measures 9-12) returns to B-flat major, showing more complex triplet figures in both staves. The fourth system (measures 13-16) is in D major, with the treble staff playing sustained chords and the bass staff featuring eighth-note triplets. The fifth system (measures 17-20) returns to B-flat major, with the treble staff playing sustained chords and the bass staff featuring eighth-note triplets. The score is characterized by its use of triplets and arpeggiated chords, creating a rhythmic and harmonic complexity.

5

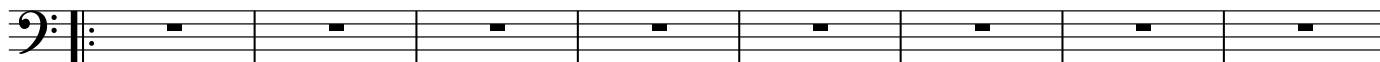
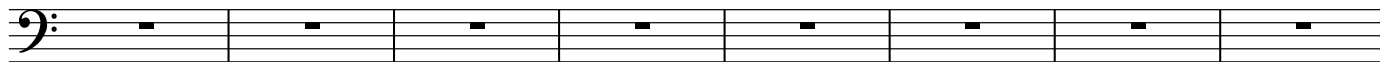
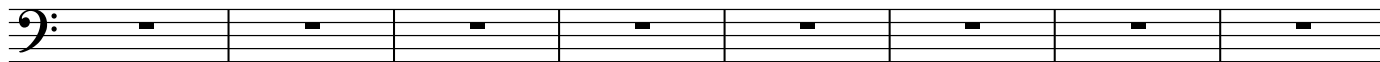
9

13

17

SOLOS

3

35 G-/D G-^Δ F-^Δ/D43 C[#]-^Δ D- G^{7b9}/D C⁷ E^b/D^b B-^{b6} B^{b6} D-51 G-^Δ/F[#] A- G F C D F^{Δ7}_{sus} A^b(^{#11})/E^b E^b^{Δ7}_{sus} F[#](^{#11})/C[#]

59

C D

A piano accompaniment score for measures 59-62. The right hand (treble clef) features complex chords with many accidentals and is heavily beamed. The left hand (bass clef) plays a simple bass line. Chord symbols C, D, (Ab/D), and (C/F#) are written above the staff. Measure 62 ends with a double bar line.

63

A piano accompaniment score for measures 63-66. The right hand (treble clef) features complex chords with many accidentals and is heavily beamed. The left hand (bass clef) plays a simple bass line. The section ends with a double bar line.